



Verband Hamburger  
und Bremer  
Schiffsmakler e.V.

## New ConTex Container Ship Time Charter Assessment Index

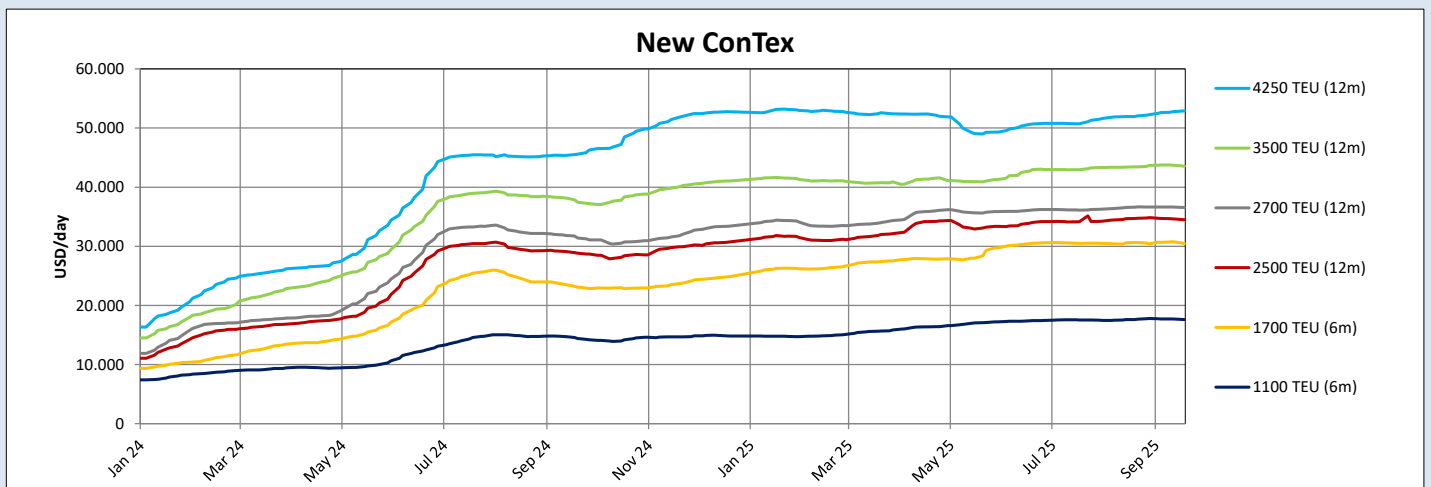
New ConTex*		1546	
18.09.25		6 mos	12 mos
Geared	1100 TEU	\$17.607	n.a.
	1700 TEU	\$30.436	
	2500 TEU	\$34.502	
Gearless	2700 TEU	n.a.	\$36.568
	3500 TEU		\$43.548
	4250 TEU		\$52.910

Legend		
↑	up	+ 2% or more
↗	steady up	from +1% to +1,9%
→	steady	+/- 1%
↘	steady down	from -1% to -1,9%
↓	down	- 2% or less

\*New ConTex evaluation is EXCLUDING 1800 TEU for 6 months period, 1100/1700/5700/6500 TEU groups for 12 months period & 2500/2700/3500/4250 TEU groups for 24 months period

New ConTex-Commentary - issued:		18.09.25
<p>The container charter markets are hovering sideways along on solid standards, looking at the pure number of transaction concluded, one could get a feeling of weakening as the number of confirmed fixtures is not that plenty; but as we are noticing a manageable smaller number of available tonnage, this does not come too much to a surprise. What is the index doing? Likewise hanging in on healthy levels with not much fluctuations. The small feeders had to accept some decreases this week with the 1700 TEU segments registers at USD 30.436 this week or losing USD 328 week on week. The Owners are still confident and asking for 24 months period within this segment and after a little while of sparring, some are successful in gaining their preferred period. The gearless 2700/2800 TEU is likewise solid, the New ConTex basis 12 months period is closing at USD 36.568, which with a decrease of - 0,2 per cent week on week almost in line with the last week. The 4250 TEU segment is gaining USD 137 week on week. The overall level is stable closing this week at 1546 points, which is about 20 per cent hire compared to 19th September 2024.</p>		

New ConTex Development											
Vessel type	Evaluated Period	Today	Week-on-Week		Month-on-Month			Year-on-Year			
		18.09.25	11.09.25	Change	Change	19.08.25	Change	Change	19.09.24	Change	Change
<b>New ConTex*</b>		<b>1546</b>	1551	-5	⇒ -0,3%	1543	3	⇒ 0,2%	1288	258	↑ 20,0%
1100 TEU	6 mos	\$17.607	\$17.695	-\$88	⇒ -0,5%	\$17.616	-\$9	⇒ -0,1%	\$14.398	\$3.209	↑ 22,3%
	12 mos	\$16.739	\$16.730	\$9	⇒ 0,1%	\$16.661	\$78	⇒ 0,5%	\$13.464	\$3.275	↑ 24,3%
1700 TEU	6 mos	\$30.436	\$30.764	-\$328	⇒ -1,1%	\$30.634	-\$198	⇒ -0,6%	\$23.091	\$7.345	↑ 31,8%
	12 mos	\$26.720	\$26.902	-\$182	⇒ -0,7%	\$26.891	-\$171	⇒ -0,6%	\$19.698	\$7.022	↑ 35,6%
1800 TEU	6 mos	\$34.118	\$34.216	-\$98	⇒ -0,3%	\$34.709	-\$591	⇒ -1,7%	\$27.836	\$6.282	↑ 22,6%
2500 TEU	12 mos	\$34.502	\$34.641	-\$139	⇒ -0,4%	\$34.707	-\$205	⇒ -0,6%	\$28.814	\$5.688	↑ 19,7%
	24 mos	\$27.500	\$27.209	\$291	⇒ 1,1%	\$26.930	\$570	⇒ 2,1%	\$24.155	\$3.345	↑ 13,8%
2700 TEU	12 mos	\$36.568	\$36.636	-\$68	⇒ -0,2%	\$36.600	-\$32	⇒ -0,1%	\$31.386	\$5.182	↑ 16,5%
	24 mos	\$28.918	\$28.841	\$77	⇒ 0,3%	\$28.577	\$341	⇒ 1,2%	\$26.120	\$2.798	↑ 10,7%
3500 TEU	12 mos	\$43.548	\$43.700	-\$152	⇒ -0,3%	\$43.425	\$123	⇒ 0,3%	\$37.435	\$6.113	↑ 16,3%
	24 mos	\$34.965	\$34.798	\$167	⇒ 0,5%	\$33.760	\$1.205	⇒ 3,6%	\$31.085	\$3.880	↑ 12,5%
4250 TEU	12 mos	\$52.910	\$52.773	\$137	⇒ 0,3%	\$51.945	\$965	⇒ 1,9%	\$45.590	\$7.320	↑ 16,1%
	24 mos	\$43.560	\$43.480	\$80	⇒ 0,2%	\$42.888	\$672	⇒ 1,6%	\$37.135	\$6.425	↑ 17,3%
5700 TEU	12 mos	\$60.442	\$60.522	-\$80	⇒ -0,1%	\$59.989	\$453	⇒ 0,8%	\$56.233	\$4.209	↑ 7,5%
6500 TEU	12 mos	\$66.456	\$66.381	\$75	⇒ 0,1%	\$65.433	\$1.023	⇒ 1,6%	\$63.272	\$3.184	↑ 5,0%



Disclaimer  
The brand NewConTex is copyrighted by Verband Hamburger und Bremer Schiffsmakler e.V. ("VHBS e.V.") and is protected by law. The NewConTex may be published only with the source reference © VHBS e.V. It is distributed to the general public for information purposes only and cannot be relied upon as a trading recommendation and does not constitute a solicitation to trade. The reported information is obtained from market sources. While every effort has been made to ensure the accuracy and the completeness of the NewConTex, VHBS e.V. makes no representations, conditions or warranties of any kind, express or implied, about the completeness, accuracy, reliability, or suitability of the NewConTex. Any reliance you place on the NewConTex is therefore strictly at your own risk. Neither VHBS e.V. nor any of its subsidiaries or affiliates nor any employee of the foregoing shall be liable or have any responsibility for any loss, liability or damage, cost or expense including without limitation, indirect or consequential loss or damage, or any loss or damage whatsoever arising from loss of data or profits arising out of, or in connection with, the use of and the reliance on the NewConTex, save for death or personal injury arising from VHBS e.V. negligence and fraudulent misrepresentation that cannot, under German law, be excluded.