



Verband Hamburger
und Bremer
Schiffsmakler e.V.

New ConTex Container Ship Time Charter Assessment Index

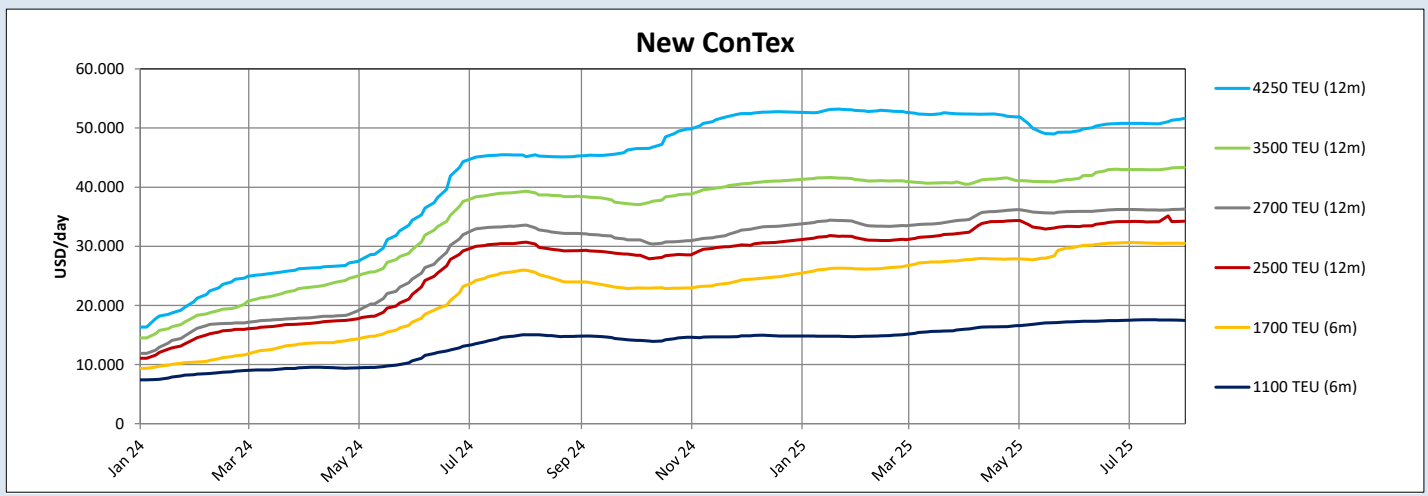
New ConTex*		1532	
31.07.25		6 mos	12 mos
Geared	1100 TEU	\$17.461	n.a.
	1700 TEU	\$30.477	
	2500 TEU	\$34.230	
Gearless	2700 TEU	n.a.	\$36.289
	3500 TEU		\$43.340
	4250 TEU		\$51.625

Legend		
↑	up	+ 2% or more
↗	steady up	from +1% to +1,9%
→	steady	+/- 1%
↘	steady down	from -1% to -1,9%
↓	down	- 2% or less

*New ConTex evaluation is EXCLUDING 1800 TEU for 6 months period, 1100/1700/5700/6500 TEU groups for 12 months period & 2500/2700/3500/4250 TEU groups for 24 months period

New ConTex-Commentary - issued:		31.07.25
<p>The container charter market was more quiet, due to both a continued shortage of ships across the board and because of the summer holidays in the Northern hemisphere. However, demand for tonnage is still very much alive, with the few ships still available in 2025 easily finding new employment.</p> <p>Charter rates remain healthy for all sizes of ships and continue to strengthen for certain vessels size especially Panamax and above, The ConTex shows a small decrease on the feeder sizes but we believe the shortage of feeders will contribute to keeping charter rates at robust levels in the foreseeable future.</p> <p>However, longer term market prospects continue to be blurred by multiple uncertainties, including the situation in the Red Sea, tariffs, USTR and the orderbook, not to mention the erosion of container freight rates, Significant front-loading of US bound-cargoes during q2 2025 suggests that the traditional August-October peak freight season will be weak on the Pacific, while it is unclear how the Asia - Europe route will ultimately perform, with rates also on a continued downward trend.</p>		

New ConTex Development												
Vessel type	Evaluated Period	Today	Week-on-Week		Month-on-Month			Year-on-Year				
		31.07.25	24.07.25	Change	Change	01.07.25	Change	Change	01.08.24	Change	Change	
New ConTex*		1532	1530	2	0,1%	1526	6	0,4%	1359	173	↑ 12,7%	
1100 TEU	6 mos	\$17.461	\$17.514	-\$53	↔ -0,3%	\$17.500	-\$39	↔ -0,2%	\$15.018	\$2.443	↑ 16,3%	
	12 mos	\$16.452	\$16.495	-\$43	↔ -0,3%	\$16.511	-\$59	↔ -0,4%	\$13.745	\$2.707	↑ 19,7%	
1700 TEU	6 mos	\$30.477	\$30.507	-\$30	↔ -0,1%	\$30.627	-\$150	↔ -0,5%	\$25.950	\$4.527	↑ 17,4%	
	12 mos	\$26.584	\$26.750	-\$166	↔ -0,6%	\$26.736	-\$152	↔ -0,6%	\$21.930	\$4.654	↑ 21,2%	
1800 TEU	6 mos	\$33.998	\$33.995	\$3	↔ 0,0%	\$33.964	\$34	↔ 0,1%	\$32.750	\$1.248	↑ 3,8%	
2500 TEU	12 mos	\$34.230	\$34.168	\$62	↔ 0,2%	\$34.193	\$37	↔ 0,1%	\$30.700	\$3.530	↑ 11,5%	
	24 mos	\$26.650	\$26.577	\$73	↔ 0,3%	\$26.443	\$207	↔ 0,8%	\$25.105	\$1.545	↑ 6,2%	
2700 TEU	12 mos	\$36.289	\$36.218	\$71	↔ 0,2%	\$36.218	\$71	↔ 0,2%	\$33.575	\$2.714	↑ 8,1%	
	24 mos	\$28.009	\$27.889	\$120	↔ 0,4%	\$27.911	\$98	↔ 0,4%	\$27.175	\$834	↑ 3,1%	
3500 TEU	12 mos	\$43.340	\$43.245	\$95	↔ 0,2%	\$42.983	\$357	↔ 0,8%	\$39.322	\$4.018	↑ 10,2%	
	24 mos	\$33.525	\$33.400	\$125	↔ 0,4%	\$32.995	\$530	↔ 1,6%	\$33.406	\$119	↔ 0,4%	
4250 TEU	12 mos	\$51.625	\$51.308	\$317	↔ 0,6%	\$50.795	\$830	↔ 1,6%	\$45.161	\$6.464	↑ 14,3%	
	24 mos	\$42.330	\$41.648	\$682	↔ 1,6%	\$41.073	\$1.257	↔ 3,1%	\$37.161	\$5.169	↑ 13,9%	
5700 TEU	12 mos	\$59.844	\$59.750	\$94	↔ 0,2%	\$59.964	-\$120	↔ -0,2%	\$57.475	\$2.369	↑ 4,1%	
6500 TEU	12 mos	\$66.200	\$66.108	\$92	↔ 0,1%	\$66.258	-\$58	↔ -0,1%	\$65.369	\$831	↔ 1,3%	



Disclaimer

The brand NewConTex is copyrighted by Verband Hamburger und Bremer Schiffsmakler e.V. ("VHBS e.V.") and is protected by law. The NewConTex may be published only with the source reference © VHBS e.V. It is distributed to the general public for information purposes only and cannot be relied upon as a trading recommendation and does not constitute a solicitation to trade. The reported information is obtained from market sources. While every effort has been made to ensure the accuracy and the completeness of the NewConTex, VHBS e.V. makes no representations, conditions or warranties of any kind, express or implied, about the completeness, accuracy, reliability, or suitability of the NewConTex. Any reliance you place on the NewConTex is therefore strictly at your own risk. Neither VHBS e.V. nor any of its subsidiaries or affiliates nor any employee of the foregoing shall be liable or have any responsibility for any loss, liability or damage, cost or expense including without limitation, indirect or consequential loss or damage, or any loss or damage whatsoever arising from loss of data or profits arising out of, or in connection with, the use of and the reliance on the NewConTex, save for death or personal injury arising from VHBS e.V. negligence and fraudulent misrepresentation that cannot, under German law, be excluded.