

## New ConTex Container Ship Time Charter Assessment Index

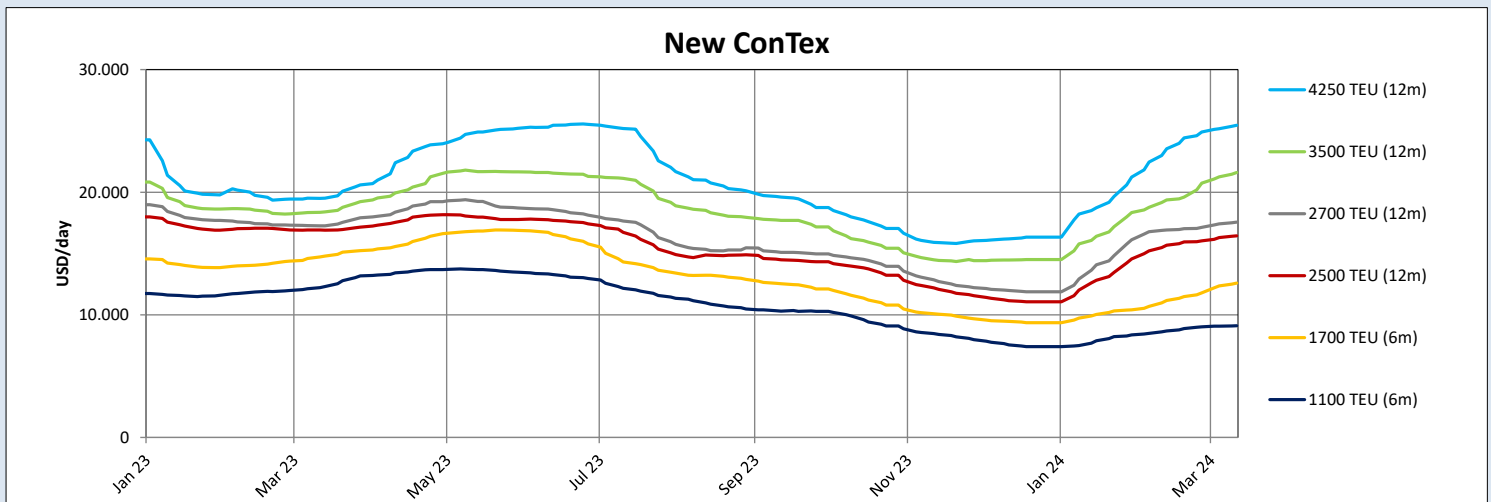
New ConTex*		736	
14.03.24		6 mos	12 mos
Geared	1100 TEU	\$9.107	n.a.
	1700 TEU	\$12.593	
	2500 TEU		\$16.448
Gearless	2700 TEU	n.a.	\$17.566
	3500 TEU		\$21.610
	4250 TEU		\$25.455

Legend		
↑	up	+ 2% or more
↗	steady up	from +1% to +1,9%
→	steady	+/- 1%
↘	steady down	from -1% to -1,9%
↓	down	- 2% or less

\*New ConTex evaluation is EXCLUDING 1800 TEU for 6 months period, 1100/1700/5700/6500 TEU groups for 12 months period & 2500/2700/3500/4250 TEU groups for 24 months period

New ConTex-Commentary - issued:	14.03.24
<p>Although the market is still northbound, the pace has slowed down a bit. The New ConTex is still gaining, but with eight points plus (1.1%) the growth has more or less halved compared to last week and the weeks before.</p> <p>As in the previous weeks, the larger segments are still the thriving factor -not that much in percentage, but rather in actual numbers- mainly attributed to imbalanced demand and supply. At the moment the declining box rates do not have the impact to outweigh the charterers' hunger for tonnage, but as mentioned several times before, once the Red Sea/Suez transit is not the bottleneck anymore, situation may change quickly.</p> <p>However, as long as liner operators keep on buying tonnage, the scarcity of available vessels will keep the charter rates at a healthy level and hopefully positive effects will soon be noticed also in the smaller tonnage segments, as those rates are still some 15 to 25% below last year's figures.</p>	

New ConTex Development											
Vessel type	Evaluated Period	Today	Week-on-Week		Month-on-Month			Year-on-Year			
		14.03.24	07.03.24	Change	Change	15.02.24	Change	Change	16.03.23	Change	Change
<b>New ConTex*</b>		<b>736</b>	728	8	↗ 1,1%	684	52	↑ 7,6%	740	-4	→ -0,5%
1100 TEU	6 mos	\$9.107	\$9.077	\$30	→ 0,3%	\$8.689	\$418	↑ 4,8%	\$12.298	-\$3.191	↓ -25,9%
	12 mos	\$8.434	\$8.391	\$43	→ 0,5%	\$7.968	\$466	↑ 5,8%	\$11.346	-\$2.912	↓ -25,7%
1700 TEU	6 mos	\$12.593	\$12.357	\$236	↗ 1,9%	\$11.177	\$1.416	↑ 12,7%	\$14.783	-\$2.190	↓ -14,8%
	12 mos	\$11.359	\$11.182	\$177	↗ 1,6%	\$10.239	\$1.120	↑ 10,9%	\$14.215	-\$2.856	↓ -20,1%
1800 TEU	6 mos	\$14.745	\$14.352	\$393	↑ 2,7%	\$13.027	\$1.718	↑ 13,2%	-	-	-
2500 TEU	12 mos	\$16.448	\$16.291	\$157	→ 1,0%	\$15.684	\$764	↑ 4,9%	\$16.905	-\$457	↓ -2,7%
	24 mos	\$14.234	\$13.934	\$300	↑ 2,2%	\$13.234	\$1.000	↑ 7,6%	\$14.780	-\$546	↓ -3,7%
2700 TEU	12 mos	\$17.566	\$17.416	\$150	→ 0,9%	\$16.923	\$643	↑ 3,8%	\$17.264	\$302	↗ 1,7%
	24 mos	\$15.230	\$15.025	\$205	↗ 1,4%	\$14.566	\$664	↑ 4,6%	\$15.368	-\$138	→ -0,9%
3500 TEU	12 mos	\$21.610	\$21.253	\$357	↗ 1,7%	\$19.375	\$2.235	↑ 11,5%	\$18.400	\$3.210	↑ 17,4%
	24 mos	\$18.415	\$18.018	\$397	↑ 2,2%	\$16.835	\$1.580	↑ 9,4%	\$16.390	\$2.025	↑ 12,4%
4250 TEU	12 mos	\$25.455	\$25.168	\$287	↗ 1,1%	\$23.550	\$1.905	↑ 8,1%	\$19.508	\$5.947	↑ 30,5%
	24 mos	\$21.535	\$21.205	\$330	↗ 1,6%	\$20.033	\$1.502	↑ 7,5%	\$17.398	\$4.137	↑ 23,8%
5700 TEU	12 mos	\$33.639	\$33.178	\$461	↗ 1,4%	\$28.833	\$4.806	↑ 16,7%	\$26.583	\$7.056	↑ 26,5%
6500 TEU	12 mos	\$40.550	\$39.950	\$600	↗ 1,5%	\$34.806	\$5.744	↑ 16,5%	\$30.756	\$9.794	↑ 31,8%



**Disclaimer**

The brand NewConTex is copyrighted by Verband Hamburger und Bremer Schiffsmakler e.V. ("VHBS e.V.") and is protected by law. The NewConTex may be published only with the source reference © VHBS e.V. It is distributed to the general public for information purposes only and cannot be relied upon as a trading recommendation and does not constitute a solicitation to trade. The reported information is obtained from market sources. While every effort has been made to ensure the accuracy and the completeness of the NewConTex, VHBS e.V. makes no representations, conditions or warranties of any kind, express or implied, about the completeness, accuracy, reliability, or suitability of the NewConTex. Any reliance you place on the NewConTex is therefore strictly at your own risk. Neither VHBS e.V. nor any of its subsidiaries or affiliates nor any employee of the foregoing shall be liable or have any responsibility for any loss, liability or damage, cost or expense including without limitation, indirect or consequential loss or damage, or any loss or damage whatsoever arising from loss of data or profits arising out of, or in connection with, the use of and the reliance on the NewConTex, save for death or personal injury arising from VHBS e.V. negligence and fraudulent misrepresentation that cannot, under German law, be excluded.