



**New ConTex
Container Ship Time Charter Assessment Index**

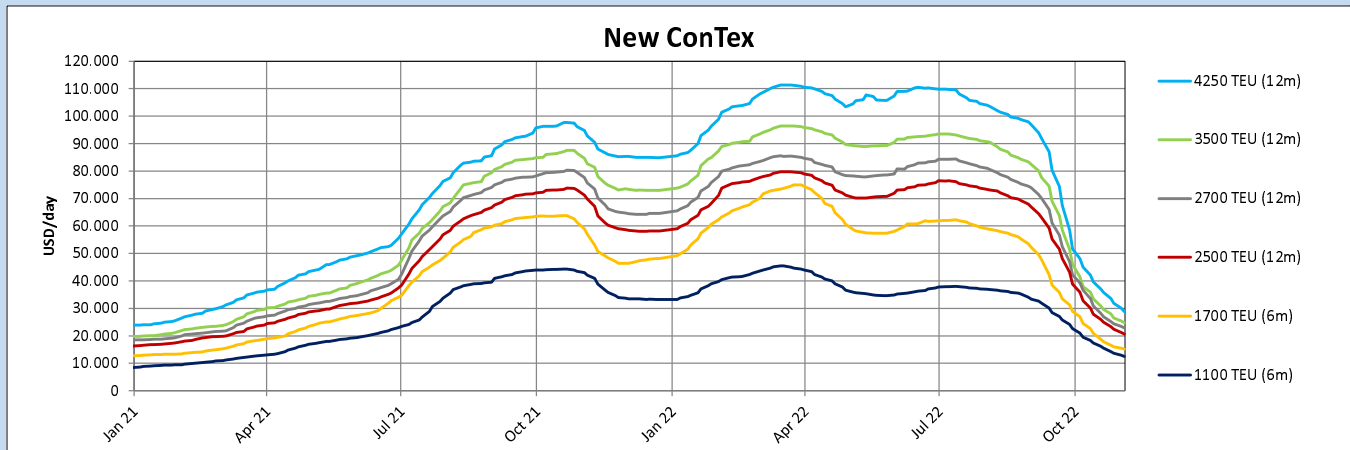
New ConTex*		904	
03.11.22		6 mos	12 mos
Geared	1100 TEU	\$12.542	n.a.
	1700 TEU	\$15.196	
	2500 TEU		\$20.682
Gearless	2700 TEU	n.a.	\$22.850
	3500 TEU		\$24.680
	4250 TEU		\$28.830

Legend		
↑	up	+ 2% or more
↗	steady up	from +1% to +1,9%
↔	steady	+/- 1 %
↘	steady down	from -1% to -1,9%
↓	down	- 2% or less

*New ConTex evaluation is EXCLUDING 1100/1700/5700/6500 TEU groups for 12 months period & 2500/2700/3500/4250 TEU groups for 24 months period

New ConTex-Commentary - issued:	03.11.22
<p>Although the New ConTex is still softening, the pace has slowed noticeably. We are now standing at around one third of where we were a year ago and it seems all segments are slowly stabilizing now, with w-o-w drops between 4.8% for 6500 TEUs and 9.4% for 12 months Panmaxes.</p> <p>When looking at actual fixtures concluded, the rates do not drop too much anymore, but charterers are more trying to cut down on the periods.</p> <p>Whether that will really be crowned with success will be seen - as activity in the chartering market is there (and apparently will continue) longer periods than just three or six months might prevail again, albeit at lower rate levels than previously seen.</p> <p>Anyway, wishing everybody a Happy Eisbein!</p>	

New ConTex Development											
Vessel type	Evaluated Period	Today 03.11.22	Week-on-Week		Month-on-Month			Year-on-Year			
			27.10.22	Change	Change	04.10.22	Change	Change	04.11.21	Change	Change
New ConTex*		904	974	-70	↓ -7,2%	1545	-641	↓ -41,5%	3062	-2.158	↓ -70,5%
1100 TEU	6 mos	\$12.542	\$13.636	-\$1.094	↓ -8,0%	\$21.000	-\$8.458	↓ -40,3%	\$42.146	-\$29.604	↓ -70,2%
	12 mos	\$11.738	\$12.727	-\$989	↓ -7,8%	\$19.404	-\$7.666	↓ -39,5%	\$35.125	-\$23.387	↓ -66,6%
1700 TEU	6 mos	\$15.196	\$16.018	-\$822	↓ -5,1%	\$27.000	-\$11.804	↓ -43,7%	\$57.000	-\$41.804	↓ -73,3%
	12 mos	\$14.304	\$15.182	-\$878	↓ -5,8%	\$24.386	-\$10.082	↓ -41,3%	\$46.200	-\$31.896	↓ -69,0%
2500 TEU	12 mos	\$20.682	\$22.395	-\$1.713	↓ -7,6%	\$35.895	-\$15.213	↓ -42,4%	\$69.891	-\$49.209	↓ -70,4%
	24 mos	\$17.073	\$18.164	-\$1.091	↓ -6,0%	\$26.795	-\$9.722	↓ -36,3%	\$43.900	-\$26.827	↓ -61,1%
2700 TEU	12 mos	\$22.850	\$24.323	-\$1.473	↓ -6,1%	\$39.318	-\$16.468	↓ -41,9%	\$75.650	-\$52.800	↓ -69,8%
	24 mos	\$18.541	\$19.886	-\$1.345	↓ -6,8%	\$29.518	-\$10.977	↓ -37,2%	\$48.279	-\$29.738	↓ -61,6%
3500 TEU	12 mos	\$24.680	\$26.450	-\$1.770	↓ -6,7%	\$41.475	-\$16.795	↓ -40,5%	\$82.667	-\$57.987	↓ -70,1%
	24 mos	\$20.370	\$21.875	-\$1.505	↓ -6,9%	\$32.275	-\$11.905	↓ -36,9%	\$56.211	-\$35.841	↓ -63,8%
4250 TEU	12 mos	\$28.830	\$31.810	-\$2.980	↓ -9,4%	\$48.200	-\$19.370	↓ -40,2%	\$92.825	-\$63.995	↓ -68,9%
	24 mos	\$24.225	\$26.575	-\$2.350	↓ -8,8%	\$37.925	-\$13.700	↓ -36,1%	\$66.189	-\$41.964	↓ -63,4%
5700 TEU	12 mos	\$36.983	\$39.944	-\$2.961	↓ -7,4%	\$63.111	-\$26.128	↓ -41,4%	\$103.556	-\$66.573	↓ -64,3%
6500 TEU	12 mos	\$46.167	\$48.472	-\$2.305	↓ -4,8%	\$71.156	-\$24.989	↓ -35,1%	\$110.267	-\$64.100	↓ -58,1%



Disclaimer

The brand NewConTex is copyrighted by Verband Hamburger und Bremer Schiffsmakler e.V. ("VHBS e.V.") and is protected by law. The NewConTex may be published only with the source reference © VHBS e.V. It is distributed to the general public for information purposes only and can not be relied upon as a trading recommendation and does not constitute a solicitation to trade. The reported information is obtained from market sources. While every effort has been made to ensure the accuracy and the completeness of the NewConTex, VHBS e.V. makes no representations, conditions or warranties of any kind, express or implied, about the completeness, accuracy, reliability, or suitability of the NewConTex. Any reliance you place on the NewConTex is therefore strictly at your own risk. Neither VHBS e.V. nor any of its subsidiaries or affiliates nor any employee of the foregoing shall be liable or have any responsibility for any loss, liability or damage, cost or expense including without limitation, indirect or consequential loss or damage, or any loss or damage whatsoever arising from loss of data or profits arising out of, or in connection with, the use of and the reliance on the NewConTex, save for death or personal injury arising from VHBS e.V. negligence and fraudulent misrepresentation that cannot, under German law, be excluded.